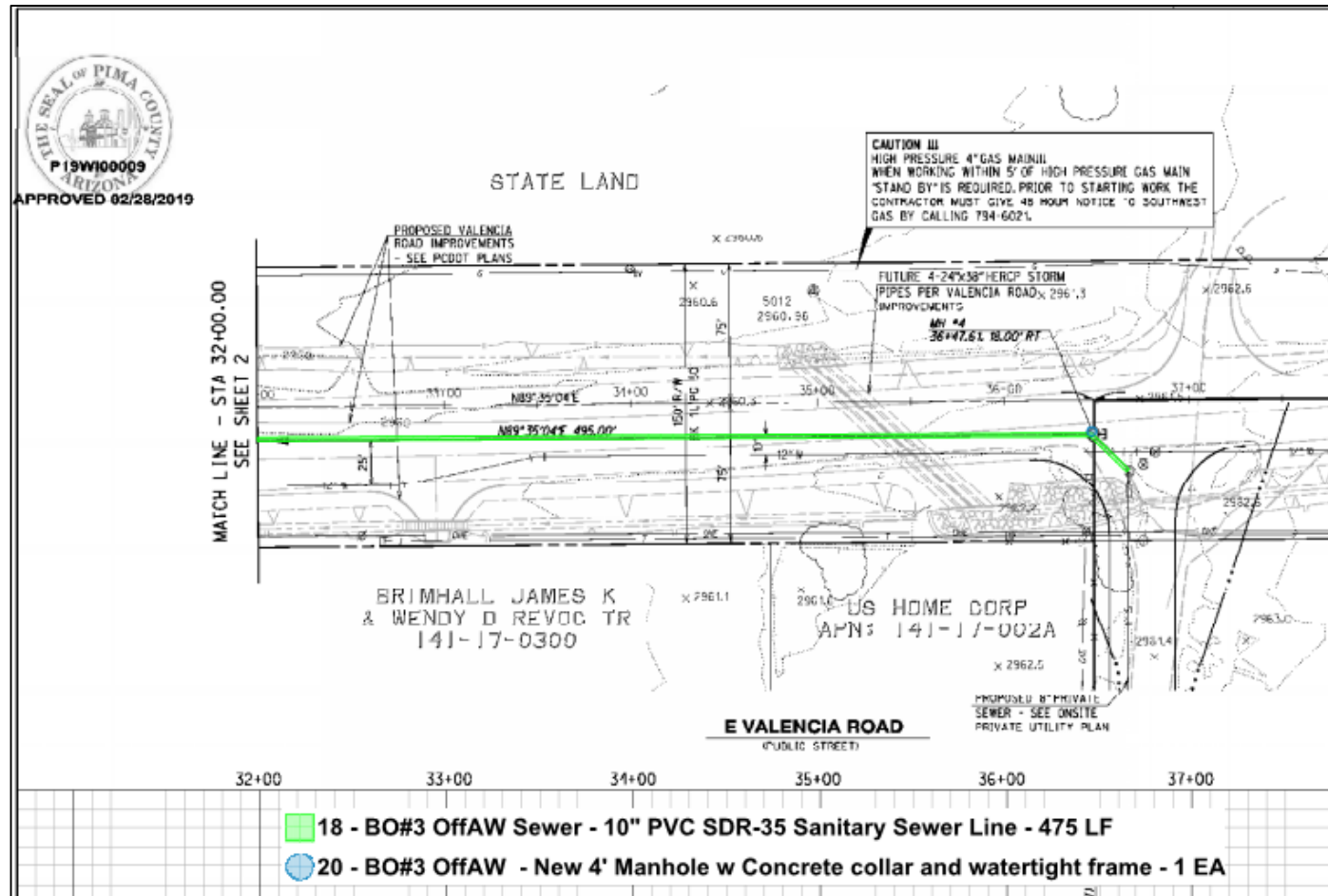


GMP1 AW – Total Cost: \$1,286,162

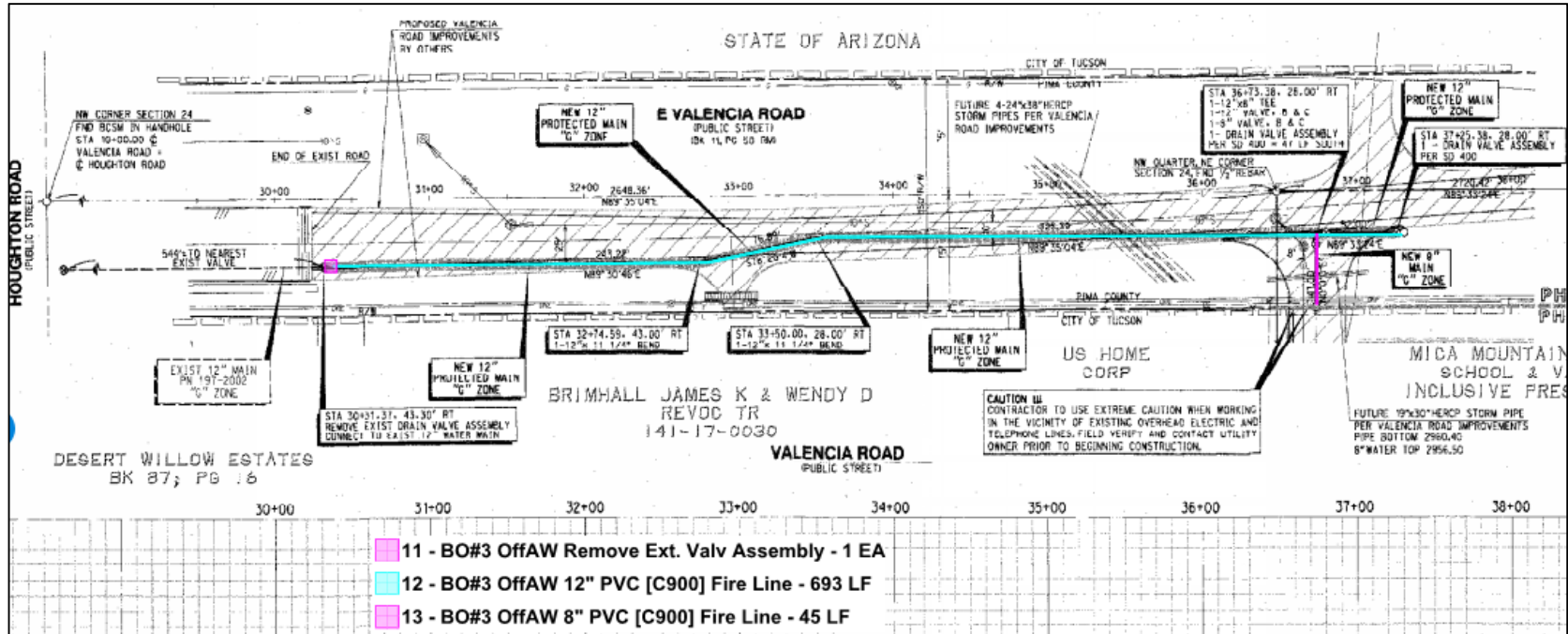
### A. Off-Site Sewer

A2. From Approved Offsite Public Sewer Sheet 3 of 4:



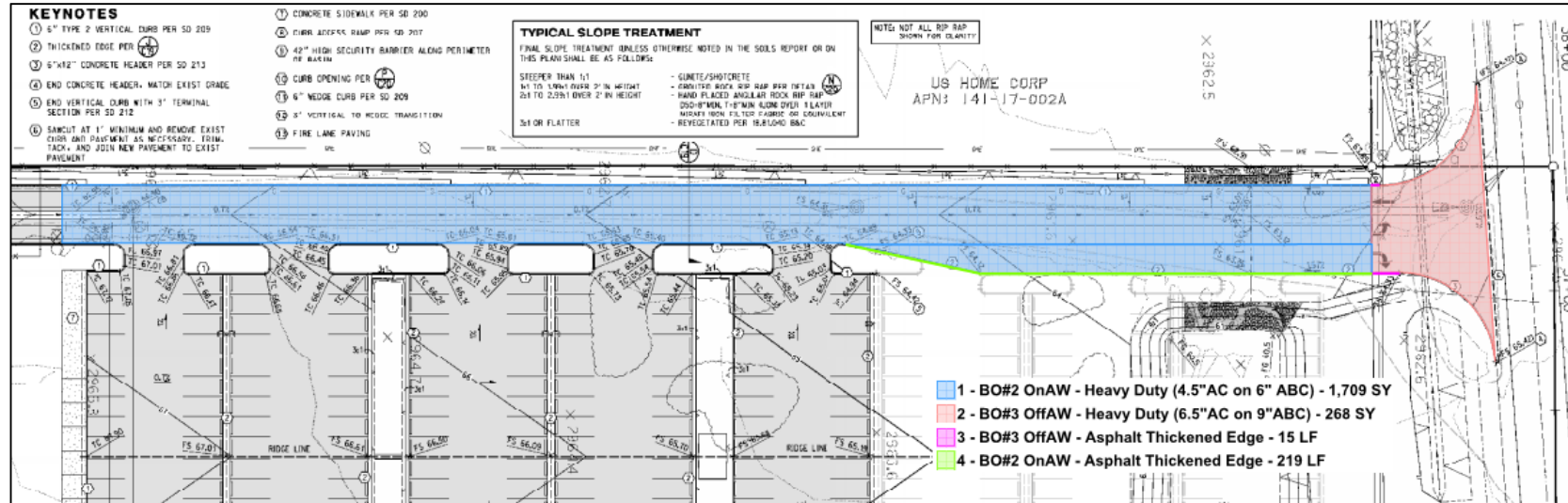
## B. Off-Site Water

B1. From Approved Offsite Water Plans Sheet 2 of 2:

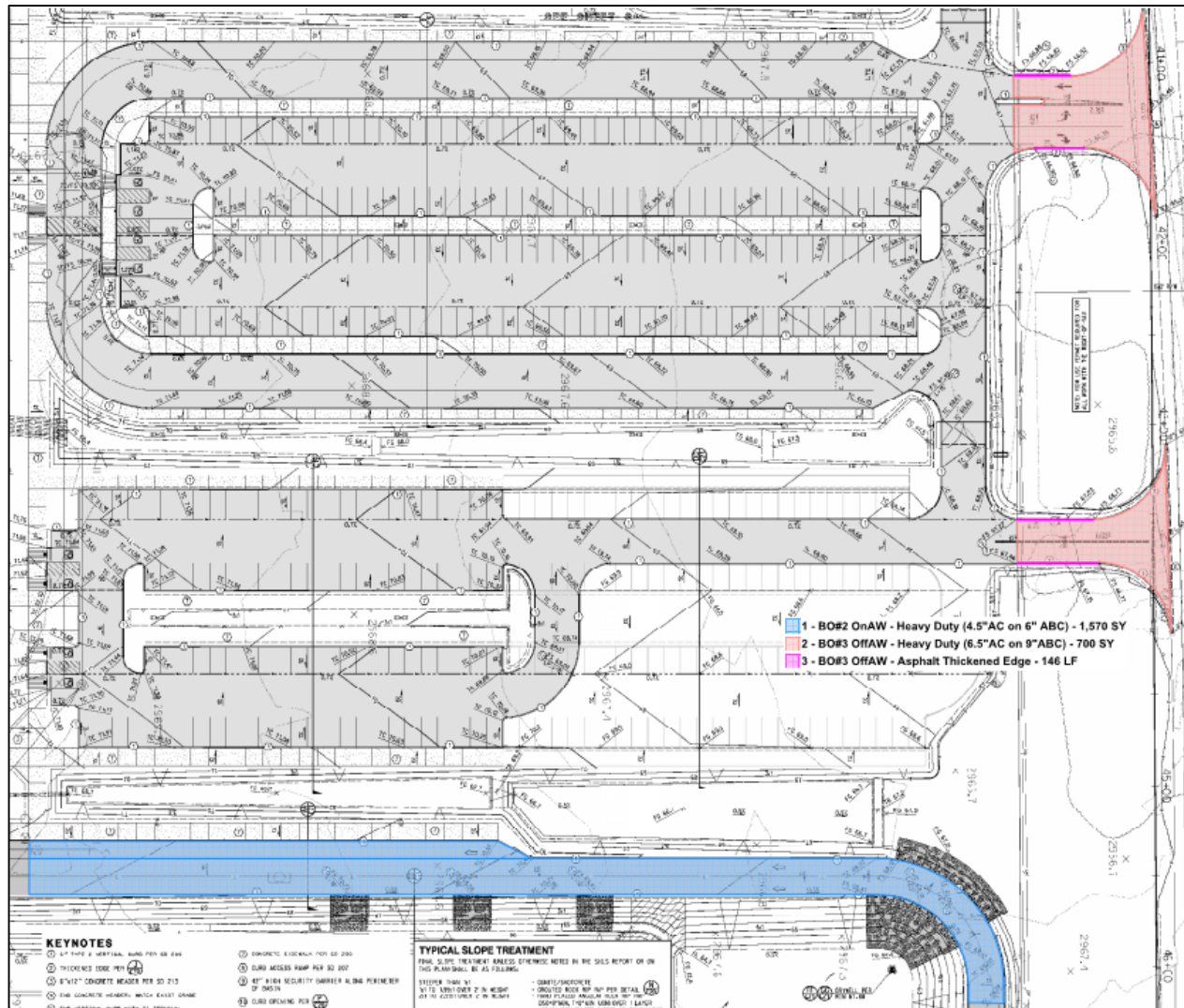


C. Earthwork, Subgrade, and Paving for Fire Lane Access (On-site and Off-site)

C1. From stamped CD Civil Set page C3:

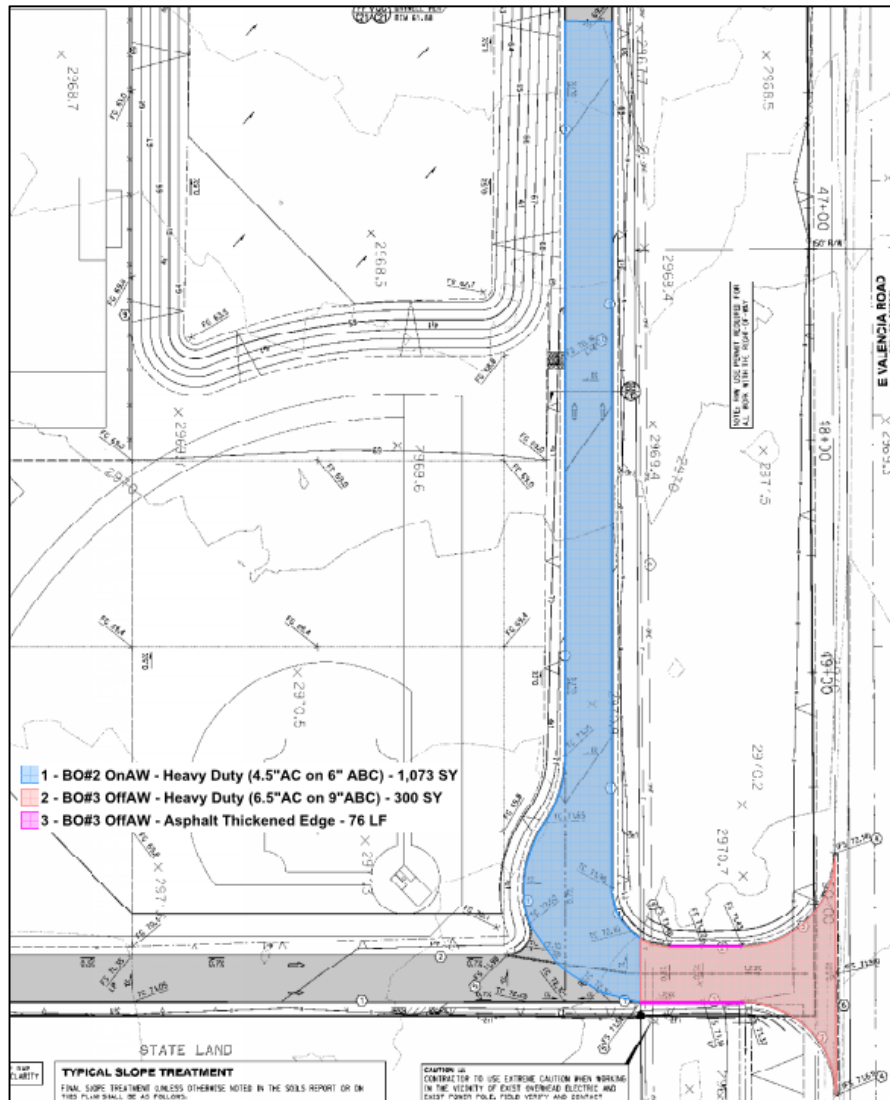


C2. From stamped CD Civil Set page C4:

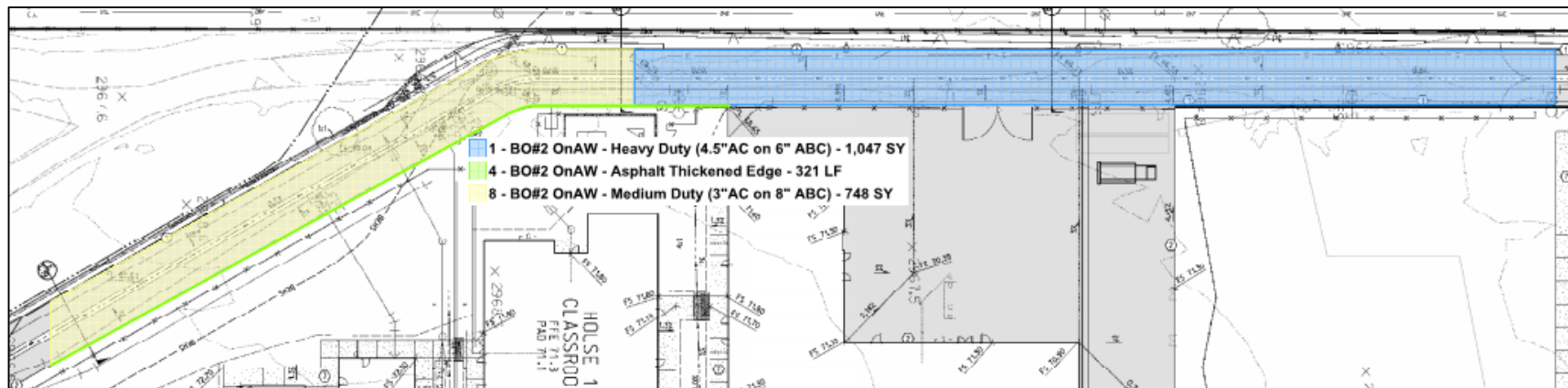




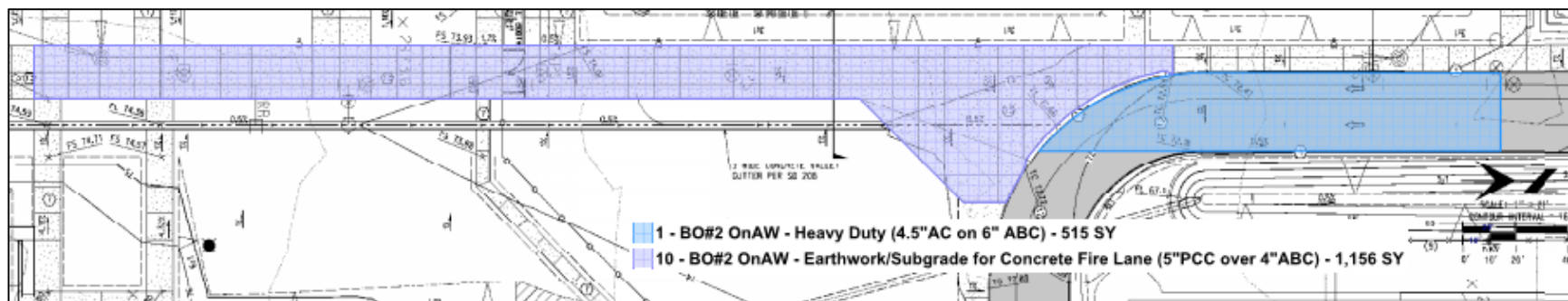
C3. From stamped CD Civil Set page C5:



C4. From stamped CD Civil Set page C6:



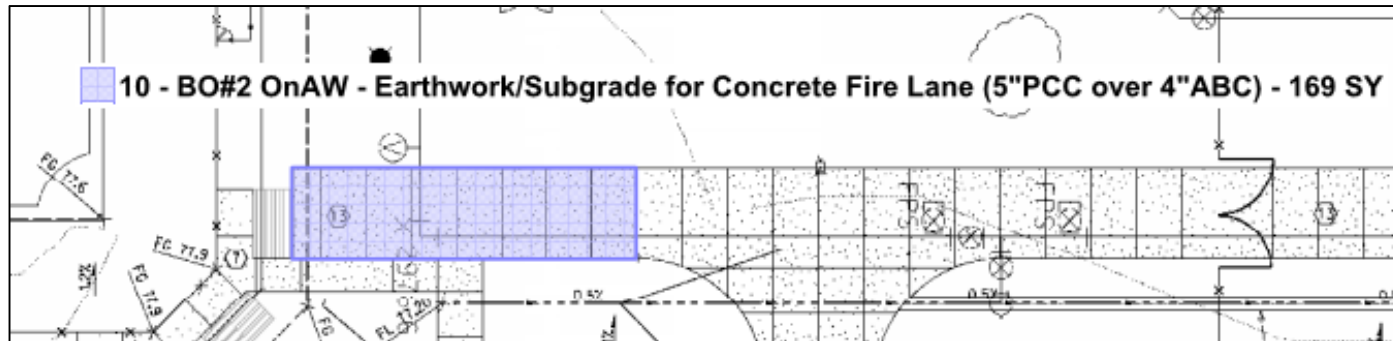
C5. From stamped CD Civil Set page C8:



[illegible]



C8. From stamped CD Civil Set page C11:



#### D. Off-site Road Addition Assumptions

We have included an allowance in GMP1 for an addition of two lanes to the Valencia Road Extension project, as we understand this to be in our scope of work. This allowance is based off the following assumptions, which amounts to two lanes for the length of the property plus 100 additional feet at 6.5" AC on 9" ABC.

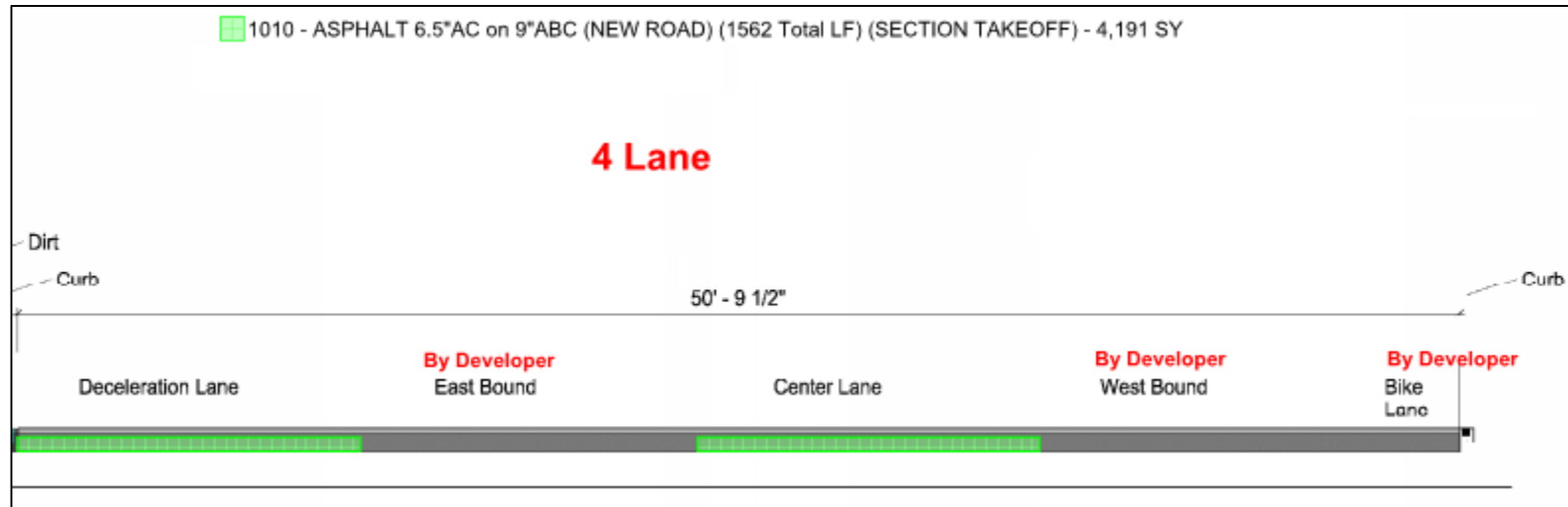
D1. CORE/Concord Assumptions Document 01:



D2. CORE/Concord Assumptions Document 02:



D3. CORE/Concord Assumptions Document 03:



-----END OF BASIS OF ADJACENT WAYS-----